

mepBLITz™

DC-i5 Mobile Electropolisher

ELECTRO POLISHER DC-i5 with Solution Feed Brush



**MADE IN
AUSTRALIA**



The mepBLITz DC - i5 is the latest model of mobile electro-polisher in the mepBLITz range. It has "Patented Inverter Technology" which allows it to deliver up to 150 amps of cleaning speed, three times the speed of its predecessor and by far the fastest machine worldwide. The mepBLITz DC - i5 has the ability to use a wide range of electrodes, depending on what the user requires.

A range of different sized and shaped solution fed brushes are available, along with large copper electrodes that can be custom made to suit for large area surface polishing. The mepBLITz DC - i5 is the first machine of its kind in the world to have an optional bath add on. The bath is liquid cooled and holds 40 litres of polishing solution. No more sending those small items off to be electro-polished and having to wait to get them back, not to mention the cost involved. Proudly Australian made in all stainless steel construction and only weighing 10 kgs dry, less than half the weight of its predecessor.

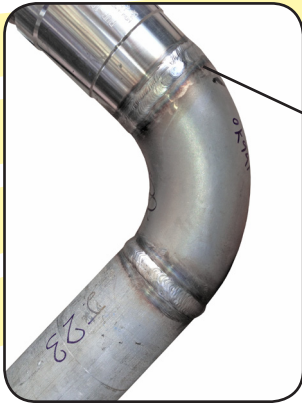
Most machines on the market can only polish at a speed of 15 to 35 amps compared with the blistering speed of the new mepBLITz DC – i5.

If you want the best in quality finish and speed then you need the new mepBLITz DC – i5.

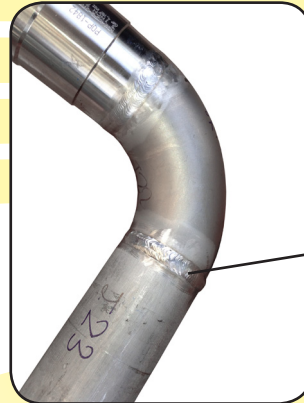
mepBLITz™

DC-i5 Mobile Electropolisher

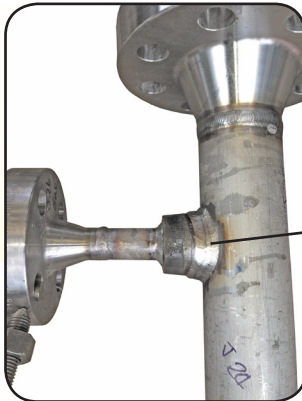
BEFORE



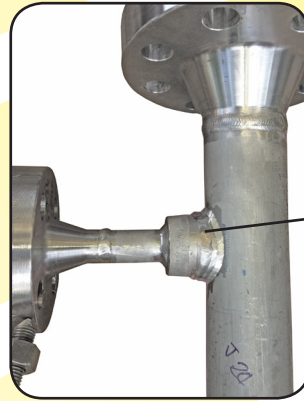
AFTER



BEFORE



AFTER



BEFORE

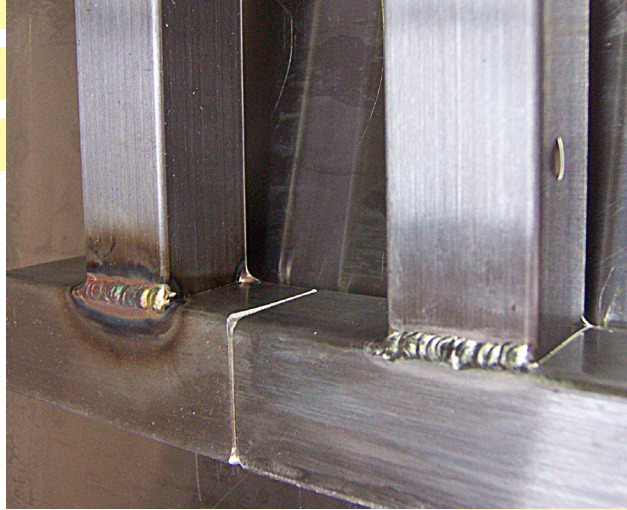


AFTER

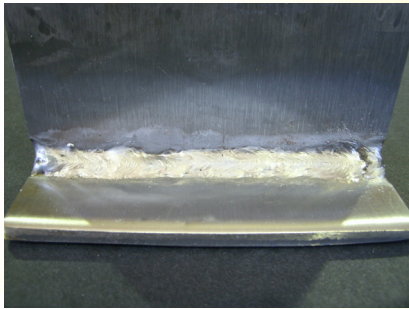


mepBLITZ™

DC-i5 Mobile Electropolisher



BEFORE & AFTER



AFTER



AFTER

mepBLITz™

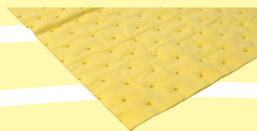
DC-i5 Mobile Electropolisher



151MEP
P1 Brush



152MEP
Bristle Sleeve



TC354
Absorbent Mat



MEPI5M60W
Solution Fed Brush



MEPI5M120W
Solution Fed Brush



MST128
Neutraliser 1 Litre



153MEP
Polishing Solution
5 Litres



153-20MEP
Polishing Solution
20 Litres

BENEFITS & SPECIFICATIONS

• Input: 240 Volts, 15 Amps	• Electro-polishing bath available
• Output: 3500 Watts, 150 Amp	• 10 kgs dry weight
• Patented Inverter Technology	• All stainless steel construction (case, pumps & clamp)
• Direct current	• 25 mm ² clamp cable with a 5 metre length
• Liquid cooled	• Simple screw on & off handle connection w/ 5 metre length
• Range of solution fed brush electrodes	• Can match any finish (2B to mirror)
• Surface electrodes available	• Works on thicknesses 0.55 mm to 50 mm



Metal Science
TECHNOLOGIES

43 Shelley Road, Moruya NSW Australia 2537

Phone/Fax: +61 2 4474 3394 Website: www.metalscience.com.au